



# The Machado Odor Chart



**“Musty” or “Mildew”**

**Mold**



**“Earthy”**

**Certain types of bacteria, Streptomyces, which is what makes the earth smell like it does. To the best of our knowledge, this is harmless.**



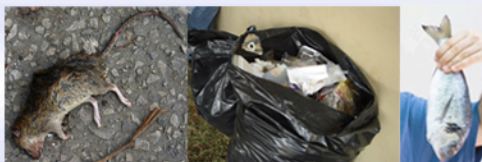
**“Dirty Socks” or “Gym Odor”**

**Bacterial, most often growing in an air-conditioning cooling coil**



**“Rotten Eggs”**

**Caused by a chemical, Hydrogen Sulfide, which is a product of decay and is a major constituent of sewer gas. Usually a rotten egg odor source will turn out to be sewer gas.**



**“Foul”, “Sour Milk”, “Garbage”, “Sewer”, “Fishy” or “Like Something Died”**

**In almost all cases bacteria (primarily), mold or yeast or a combination of**



**“Sharp Chemical Smell”**

**Most often “Volatile Organic Compounds” in the home or office setting.**



**“Chemical Odor”**

**Usually some chemical**



**This is a general odor chart that can help narrow the sources of an indoor air quality problem. Sometimes it is assumed that an indoor air quality investigation has to be complicated and expensive. In actual fact, many times when there’s a persistent odor it can be a matter of “following your nose” to the odor and determining the location and source.**

**For further assistance with your Indoor Air Quality Investigations call 1 800 358-3828**